

DOMOSO AGRI-WATCH

Beyond Security. We Are The Collateral.



- Unlocking Agricultural Finance in Africa.
- Transforming Livestock into Bankable Assets.
- Powered by Solar, Offline Edge AI.

The 240 Billion FCFA Problem Isn't Just Theft

The real loss is the locked financial potential of millions of livestock assets.

240 Billion FCFA

Lost Annually in Côte d'Ivoire.



- **Asset Risk:** Lenders and insurers face a critical information gap. They cannot reliably verify the existence, number, or health of livestock, which represents 40% of Africa's agricultural GDP.
- **Locked Capital:** As a result, livestock—the primary capital for millions of farmers—remains an unbankable, 'dead' asset, preventing access to credit.
- **Systemic Barrier:** This prevents farmers from securing loans for expansion or insuring against loss, trapping them in a cycle of subsistence.
- **The Vicious Cycle:** 85% of physical losses (theft, disease) are preventable, but the lack of capital prevents investment in the very tools needed for prevention.

Introducing Agri-Watch: The Technical Collateral for Agriculture

We make livestock visible, verifiable, and valuable to the financial ecosystem.



Capture & Analyze On-Site



Generate Daily Proof of Asset Report



Unlock Financial Services

- **Daily, Certified Inventory:** Our solar-powered, offline Edge AI system provides immutable, time-stamped reports on herd count and location, operating independently of internet connectivity.

- **Health & Behavior Monitoring:** We go beyond simple presence detection by analyzing behavior to flag early signs of illness, making the asset's quality verifiable.

- **The Trusted Third Party:** For the first time, banks like CNCA have a reliable, technical 'eye on the ground,' drastically reducing verification costs and fraud risk, turning livestock into a liquid asset.

Our Engine for Growth: A System Designed for Scale and Impact

Our strategy transforms us from a product into an indispensable platform.

- 1. Value Proposition:**
From Security to **Financial Guarantee.**
- 2. Business Model:**
From High CAPEX to **Recurring Revenue (HaaS).**
- 3. Technology:**
From Theft Alerts to **Active Health Management.**
- 4. Operations:**
From Centralized Support to a **Local Job Creation Network.**
- 5. Ecosystem:**
From Competition to **Essential Security Plugin.**



Value Proposition: We Don't Sell Security; We Sell Bankability

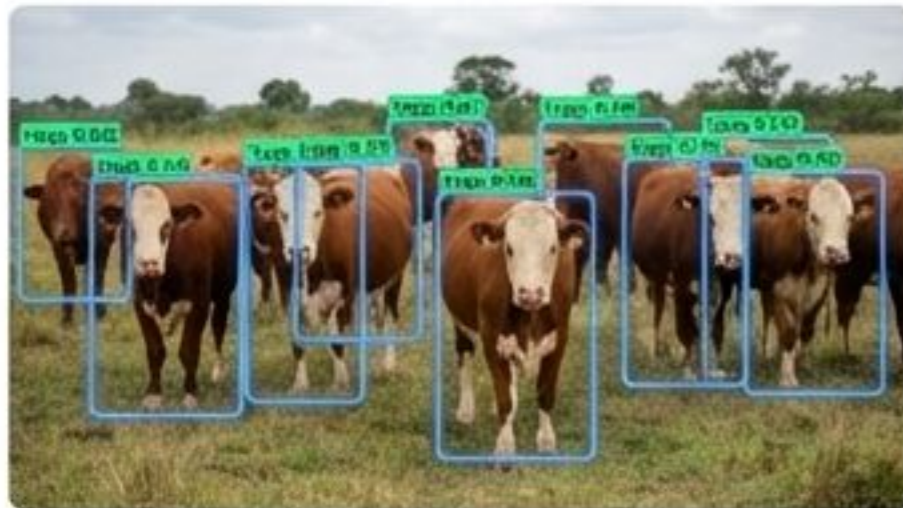
Our "Proof of Asset" reports are the missing link for agricultural credit.



Certified Asset Report

Prepared For: CNCA Logo

Farm Name: Ferme N'DA, Azaguié
Report Date: October 26, 2023
GPS Coordinates: 6.9821° N, 4.0202° W



Verified Headcount:	20 Bovine
Health Status:	✓ Normal
Location Verification:	Confirmed On-Site

Report Generated by DOMOSO Agri-Watch Edge AI. Immutable & Time-Stamped.

“

“With DOMOSO data, we can create a new class of asset-backed loans and reduce our risk scoring.”

– Aspirational Quote from a Banking Partner

”



De-risking Lenders: We provide the data-driven confidence banks like CNCA need to extend credit against livestock assets, as outlined in our partnership discussions.



Enabling Insurance: Insurers can finally write viable policies based on verified, daily data on asset existence and health, reducing fraud.



Farmer Empowerment: Farmers can leverage their primary asset to access capital. Our data makes them eligible for financing at preferential rates (e.g., 8% vs 12% market rate with CNCA).



Our Role: We are the indispensable technical auditor, the 'Carfax for Cows.'

Business Model: Crushing Adoption Barriers with HaaS

Instead of selling expensive hardware, we rent peace of mind.

Old Model	DOMOSO HaaS Model
477,000 FCFA	 Low Installation Fee  Low Annual Subscription from 17,500 FCFA/month
High Upfront CAPEX	Investor-Friendly Annual Recurring Revenue (ARR) 



- **Hardware-as-a-Service (HaaS):** A low one-time installation fee (payable via cash, mobile money, or CNCA credit) followed by an affordable, pre-paid annual license.



- **Investor-Friendly ARR:** Shifts revenue from lumpy hardware sales to a stable, scalable, high-margin recurring model (70% margin on licenses).



- **Aligns with Farmer Cash Flow:** The model mimics familiar expenses like insurance or mobile phone top-ups (via USSD), fitting naturally into the rural economy.



- **Reduces Risk for All:** Farmers avoid high capital outlay; DOMOSO builds a long-term, valuable customer base with a projected 92% renewal rate.

Technology Expansion: From Passive Security to Active Intelligence

Our Edge AI is learning to see what the human eye can't.

Standard Theft Detection



Baseline Security: Detecting external threats.



Beyond Theft Detection: As per our 2026 roadmap, we are training our Edge AI to analyze animal behavior—gait (limping), social interaction (isolation), and feeding patterns.



Predictive Health Alerts: The system will identify early signs of disease, allowing for rapid intervention before it spreads, saving entire herds and further securing the asset's value.

Predictive Health Monitoring



Future Value: Proactively managing asset health.



Indispensable Daily Tool: This transforms Agri-Watch from a 'just in case' security product into an active 'Veterinary Assistant' used every day, dramatically increasing stickiness.



Data Moat: Every observation enriches our proprietary dataset, making our AI smarter and creating a powerful competitive barrier.

Operational Strategy: Building a Hyper-Local Technician Network

We scale our service by investing in the communities we serve.



- **Solving the 'Last Mile' Problem:** We train and certify local agricultural cooperatives (like those in FENACOPRA-CI) as our installation and maintenance partners.



- **Creating Skilled Jobs:** Our model is projected to create 500 new technical jobs in rural areas for installation, support, and maintenance.



- **Rapid, Reliable Service:** Farmers get fast, on-site support from someone in their own community, building trust and ensuring system uptime.



- **Perfect Alignment with Partners:** This model directly supports the youth employment and rural development goals of major partners like ANADER and the PNIA II national plan.



Partner Alignment:



FENACOPRA-CI

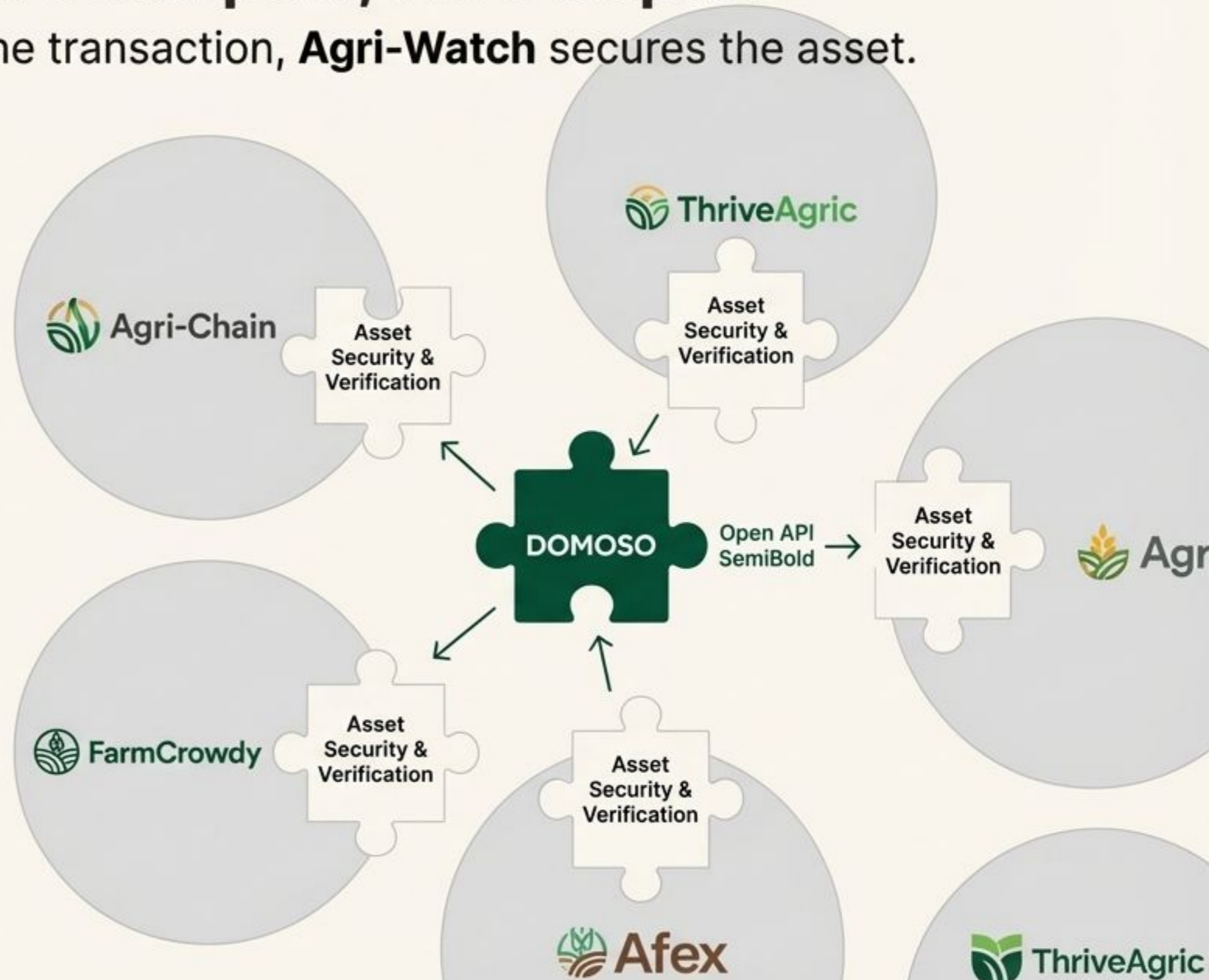


ANADER

Ecosystem Strategy: We Don't Compete, We Complete

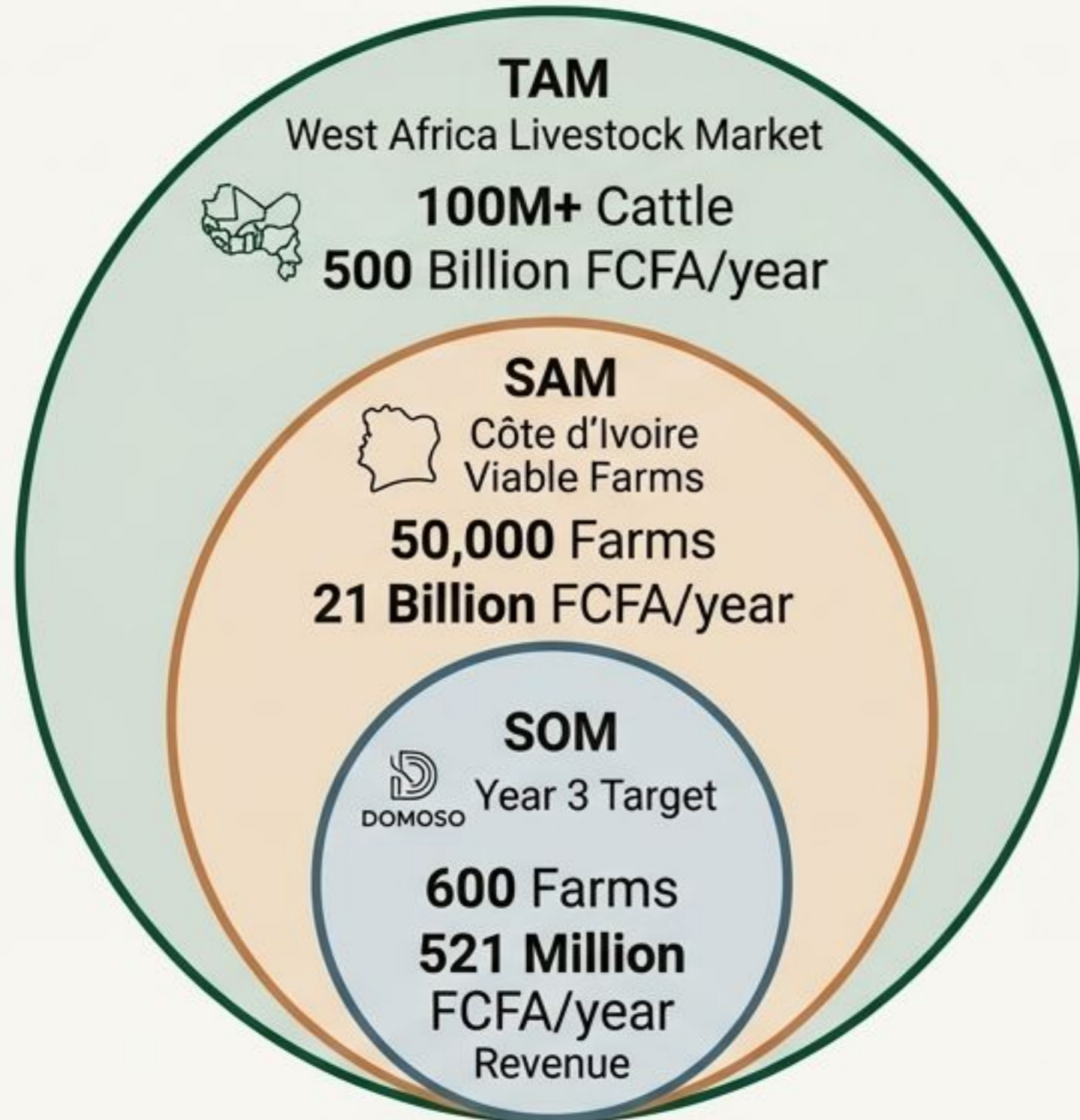
While platforms like Agri-Chain manage the transaction, **Agri-Watch** secures the asset.

-  **A Focused Strategy:** We are laser-focused on being the undisputed best-in-class solution for physical asset verification and security via our open API.
-  **Integration, Not Confrontation:** We provide a simple REST API for ag-platforms to integrate our "Proof of Asset" data into their own services (e.g., marketplaces, supply chain tracking, credit scoring).
-  **A Win-Win Proposition:** Platforms gain a critical security and verification layer without the R&D cost. We gain access to their user base.
-  **Becoming the Standard:** Our goal is to be the "Stripe for Agricultural Asset Verification"—an essential, embedded piece of the digital agricultural stack.



The Market: Digitizing the Foundation of the Rural Economy

Our initial market in Côte d'Ivoire is just the beginning.



Immediate Focus (Côte d'Ivoire): A 21 Billion FCFA addressable market with strong government support (PNIA II) and clear traction with 3 signed pilot farms.



Regional Expansion (West Africa): A massive 500 Billion FCFA opportunity in a region with over 100 million head of cattle.



Driven by Macro-Trends: Population growth, climate pressure, and mobile penetration (46% in rural areas) are accelerating the need for AgriTech solutions.



Clear Path to Scale: Our projections show a clear path to 1,500+ farms by 2028, reaching breakeven in month 20.

Our Unfair Advantage: Deep Founder-Market Fit

We are building the solution we needed ourselves.




**Kimana Misago,
Co-Founder & CTO**


- 9+ Yrs **DevOps/Cloud/AI**
- Google & KCNA Certified
- Built AgriTech IoT Prototypes (AquaConnect)
- **Enterprise-Grade Architecture**




**Constant N'DA,
Co-Founder & CMO**

- 3+ Yrs **Active Livestock Farmer**
- Direct Victim of Theft (Lost 10+ Cattle)
- Embedded in Farmer Cooperatives
- **Authentic Market Voice**

 **Kimana Misago (CTO):** A world-class technologist with deep experience building scalable, secure AI and cloud systems for 200+ enterprise clients.

 **Constant N'DA (CMO):** An active farmer who has personally lost over 6M FCFA to theft and disease. His credibility and network in the farming community are unparalleled.

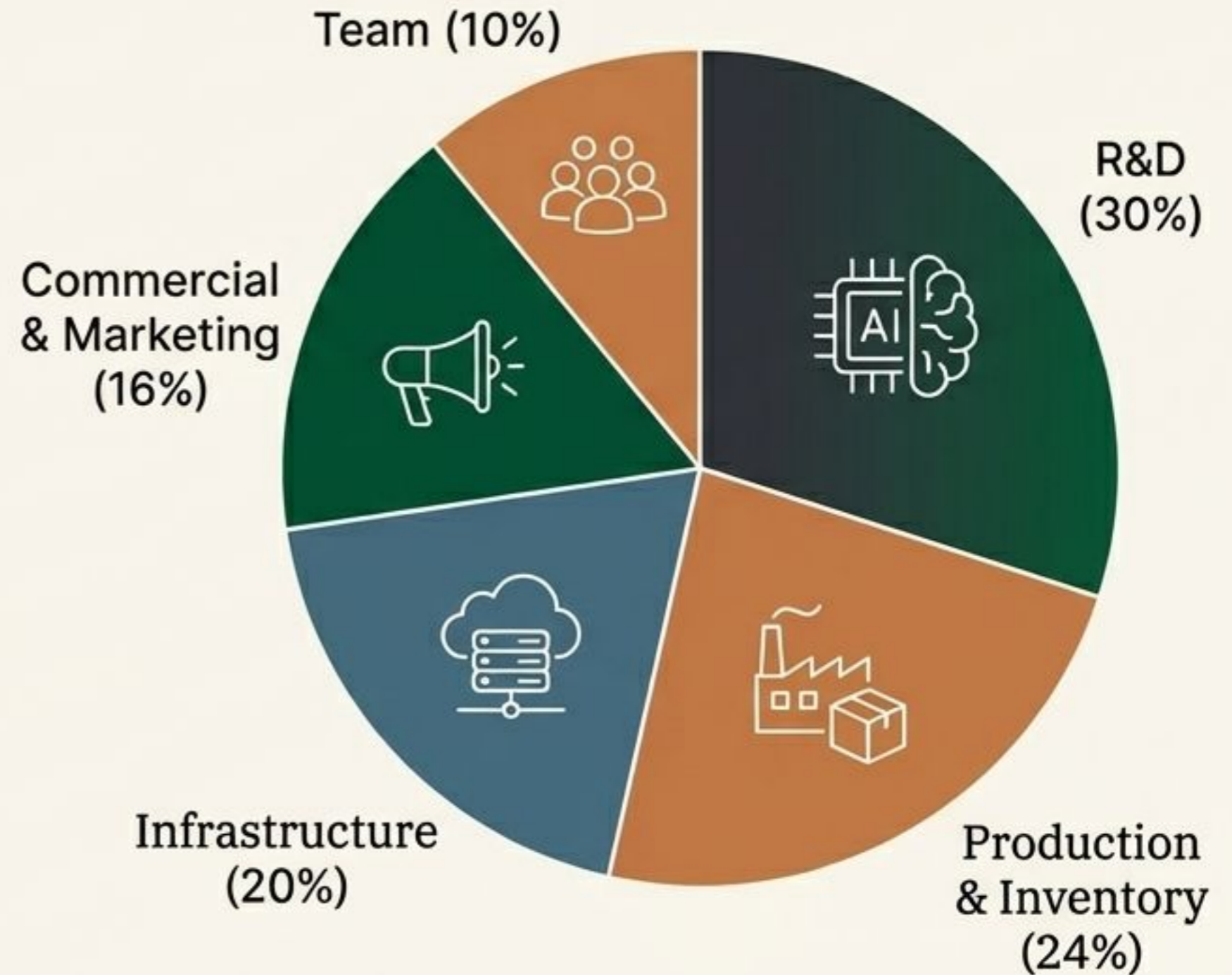
 **The Synergistic Duo:** This unique blend of cutting-edge technical expertise and authentic, lived experience is our core strength. We build with empathy and execute with excellence.

Fueling the Financial Revolution in African Agriculture

We are seeking 500M FCFA to scale our impact and infrastructure.

Funding Ask: 500 Million FCFA (Series A)

- ✓ **Scale Production:** Manufacture and hold inventory for 200+ Agri-Watch units.
- ✓ **Expand the Network:** Train and equip technician networks in 3 new regions via cooperatives.
- ✓ **Enhance AI:** Finalize the predictive health monitoring module (Phase 5).
- ✓ **Secure Key Partnerships:** Formalize integrations with CNCA and a leading telecom operator like Orange CI.



We Are The Trusted Layer for Agricultural Finance

Join us in building the future of African AgriTech.

We are not just a surveillance camera. We are the trusted technology third-party unlocking agricultural finance. Through our solar, offline Edge AI, we transform livestock into bankable, insurable assets while creating technical jobs in rural areas.